



**mouchel** 

Highways asset  
management



## Mouchel's aim is to advance infrastructure asset management practices, leading to better road networks that are maintained in the optimal, and most sustainable, way.

Mouchel is one of the UK's leading highway and professional support services companies and supports the owners and operators of highway assets. The company manages, maintains and improves thousands of kilometres of motorway, trunk road and local road assets.

These assets include:

- Road pavement.
- Footways and footpaths.
- Bridges.
- Tunnels.
- Lighting.
- Roadside technology.
- Drainage.
- Fences.
- Road markings.
- Traffic signs.
- Landscaped areas.
- Embankments and cuttings.

### For local authorities:

- Mouchel manages, maintains, and improves council owned assets in a sustainable way, with a focus on urban and rural road networks, using initiative such as safer routes to school and green routes for buses.
- Mouchel's ability to manage entire local highway networks and its innovative strategic alliances with contractors and local authorities puts the company at the forefront of practical highway asset management.

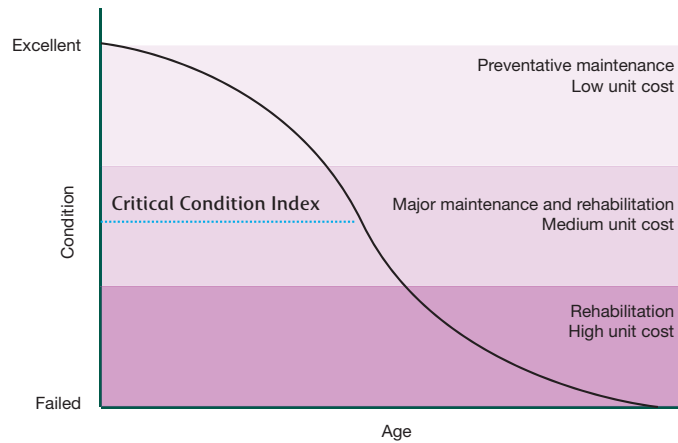
### For the Highways Agency:

- Mouchel provides services and technologies for the management, development and improvement of their highway assets.
- Mouchel developed their National Online Motorway Asset Database (NOMAD), an inventory tool for all roadside technology, providing fault-recording, maintenance and condition reporting.

## Asset management plans

A highway network is a hugely valuable asset and to ensure its preservation, maximise its availability and minimise its whole-life cost the development and implementation of an asset management plan is essential. The benefits of such a plan include:

- lower whole life costs - large savings can be made if major interventions are optimally timed.
- better use of available finance - planned cash flow.
- better programming and prioritisation of work.
- reduced congestion caused by road works.
- fewer complaints.
- greater user satisfaction.
- maintain asset value.



Mouchel played a significant role in the preparation of what is generally regarded as the first UK Highway Asset Management Plan, for Hertfordshire County Council, completed in 2001.

More recently Mouchel staff were part of the team responsible for the production of the Transport Asset Management Plan for Westminster City Council and assisted in the development of asset management plans for:

- Wokingham Borough Council,
- Rochdale Metropolitan Borough Council
- Doncaster Metropolitan Borough Council
- Calderdale Council
- London Borough of Harrow

Mouchel is currently facilitating the development of a Joint Transport Asset Management Plan for the West of England Partnership (made up of the four unitary authorities: Bath & North East Somerset, Bristol, North Somerset and South Gloucestershire)

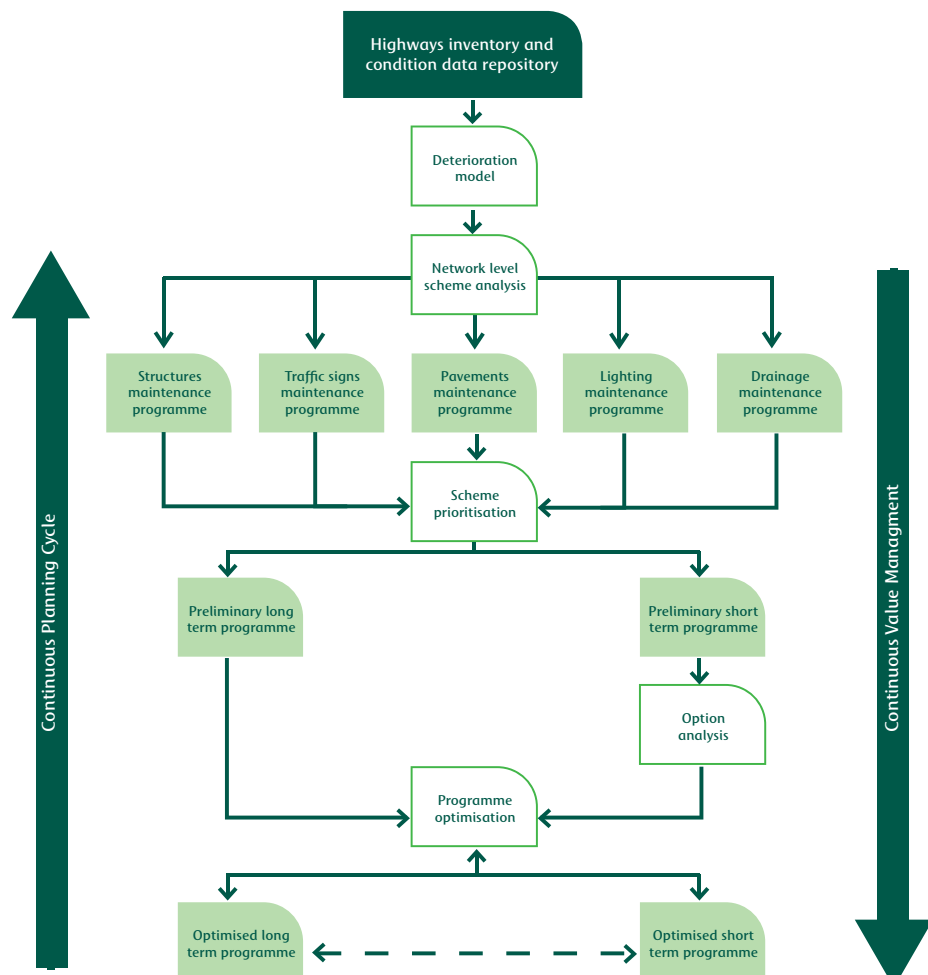
Mouchel's approach to advising clients on asset management is based on its experience of facilitating the development of asset management plans and its practical experience of network operation and management. It carries out reviews of current systems, advises on future needs, carries out gap analyses and manages the production of the plan.

Mouchel also assists clients with valuing their highway infrastructure assets, in accordance with the guidance document, to meet the needs of the Whole of Government Accounts.

## Inventory and data collection

A comprehensive and accurate inventory is vital for good asset management. Before surveyors are sent onto the network it is important that the scope and framework of the items and attributes to be collected is properly specified. Attempting to collect too many data can undermine the future value of the inventory.

Mouchel can advise on inventory specification and procurement. It can carry out inventory surveys, maintain and update asset inventory using its own specialist staff.



## Integrated Asset Management

Mouchel's vision for integrated asset management brings together best asset management practice and applies it to all asset types, in a consistent manner.

All UK highway authorities are making significant steps towards improving asset management practices. The publication of the 'Framework for Highways Asset Management' and the development of Transport Asset Management Plans have changed the way we think about the management of our assets.

An integrated approach takes asset management to the next level by bringing together all asset types and analyse them within a common framework. This approach maximises efficiencies and minimises disruption to users, while maintaining desired levels of service. Spend profiles, at asset level and network level, will be generated that will indicate future funding requirements.

There are many tools and processes that can be developed to ensure that an integrated approach delivers maximum benefits, and Mouchel is currently in the process of delivering these to its clients.

This includes value management, which plays an essential role in ensuring that maintenance schemes are assembled into programmes of work that align with the objectives of the authority and deliver value for money.

Mouchel has assisted Westminster City Council in developing their value management framework for maintenance

schemes. Mouchel staff participated in workshops and carried out a pilot study to test the application of the proposed value management process.

## Maintainability audits

All network improvement schemes should be assessed at the design stage for their future maintenance implications, as recommended in the 2005 Well-maintained Highways code of practice. The DfT in England require evidence of such a system in LTP appraisals.

Mouchel has the breadth and depth of expertise to carry out maintainability audits.

## Sustainability audits

It is increasingly important to consider the sustainability of all highway asset management and network management operations. Mouchel's highway and environmental specialists can carry out sustainability audits of individual schemes or of complete maintenance regimes. Action plans would be prepared, and Mouchel can manage their implementation and ongoing monitoring.

Mouchel is a leader in promoting both the use of recycled materials in highway maintenance operations and in the re-use of existing worn out materials.

When Mouchel revised the specification for the London Borough of Hounslow's term carriageway surfacing contract it included innovative, challenging recycling targets for the successful contractor.

For further information, please contact:

Trevor Collett or Leigh Boswell

Mouchel  
307-317 Euston Road  
London  
NW1 3AD

T: +44 (0)20 7874 7700

Trevor Collett  
M: +44 (0)7976 343842  
E: trevor.collett@mouchel.com

Leigh Boswell  
M: +44 (0)7770 541482  
E: leigh.boswell@mouchel.com

## The Structures Asset Management Process (STAMP)

Created by Mouchel with Network Rail, STAMP enables Network Rail to determine the most economic whole life maintenance solutions for individual structures. This capability has enabled Mouchel to develop the SACP (Structures Annual Cost Profile), which provides detailed network-wide estimates of the work and funding needed to maintain and renew structures.

Having been accepted by the Office of the Rail Regulator, STAMP has now been distributed to all Network Rail Regions.

It is being further developed by Mouchel to be applied to the full range of highway infrastructure assets, such as pavements, and for whole highway networks.

## Asset management services

Mouchel also provides asset management services in the following sectors:

- Rail
- Property
- Water
- Utilities
- Marine

